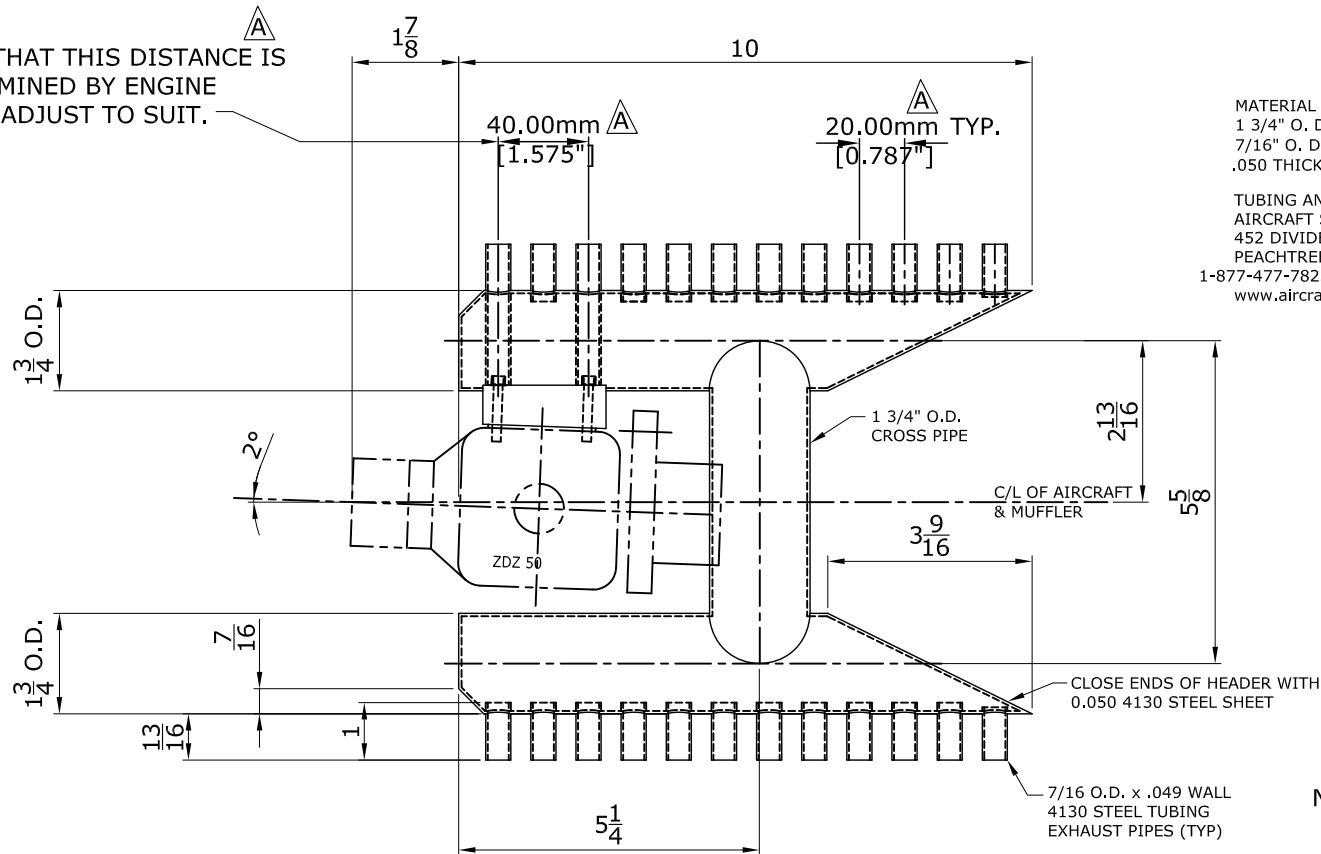


ISSUE.	DATE.	MODIFICATION.
A	AUG 5 12	NOTE ADDED, DIM CHANGED.

NOTE THAT THIS DISTANCE IS DETERMINED BY ENGINE USED. ADJUST TO SUIT.

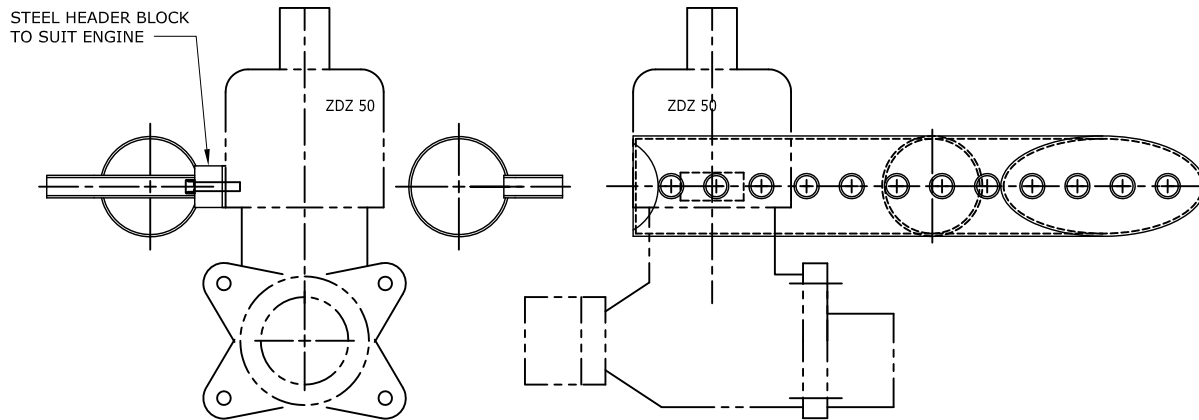


MATERIAL REQUIRED:  
 1 3/4" O. D. x .049 WALL 4130 STRUCTURAL TUBING 24" LONG  
 7/16" O. D. x .035 OR .049 WALL 4130 STRUCTURAL TUBING 30" LONG  
 .050 THICK, 4"x24" 4130 STRUCTURAL SHEET STEEL

TUBING AND SHEET AVAILABLE FROM:  
 AIRCRAFT SPRUCE & SPECIALTY CO.  
 452 DIVIDEND DRIVE  
 PEACHTREE CITY, GA.  
 1-877-477-7823  
 www.aircraftspruce.com

NOTE:  
 FOR REAR EXHAUST ENGINES  
 TIE INTO CROSS PIPE

NOTE: ESTIMATED WEIGHTS-  
 STEEL CONSTN.-2.6 lb.  
 ALUMINUM CONSTN-14 oz.



# CURTISS P-6E HAWK.

## MUFFLER.

DESIGNED BY- BOB BISHOP  
 WEB SITE-[www.rc-airplanes-simplified.com/rc-airplanes-plans/html](http://www.rc-airplanes-simplified.com/rc-airplanes-plans/html)  
 MATERIAL- ALUMINUM OR STEEL.  
 SUPPLIER- BISSON CUSTOM MUFFLER ([www.bissonmuffler.com](http://www.bissonmuffler.com))  
 SCALE- FULL SIZE.

reference:  
 HawkMuffler.dwg  
 HawkMuffler.pdf  
 rc-p-6e-14.jpg

